



HUMAN RESOURCES SPECIAL EDITION STUDENT NEWSLETTER - FALL 2022



Welcome to the 2022 fall semester. All of us at Citrus College wish you much success in your classes!

In preparation for your on-campus classes and activities, please know that the college has, consistent with requirements and recommendations from the County of Los Angeles Department of Public Health, modified the previous COVID-19 safety protocols.

FALL SEMESTER PROTOCOLS

- COVID-19 testing available on a voluntary basis
- Daily pre-screening using the Citrus Mobile app
- Building/classroom check-in using the QR code scanner on the Citrus Mobile app
- Face masks not required but recommended while indoors
- Thorough hand washing

- COVID-19 positive and close contact protocols
- Vaccination strongly recommended (not required)

(subject to modification based on requirements from the County of Los Angeles Department of Public Health)

TESTING

Voluntary Testing Available on Campus

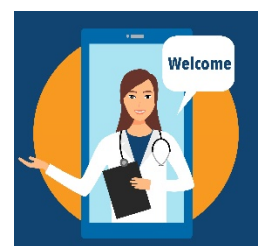
Free COVID-19 testing will be available to students. Students wishing to be tested or receive a test kit may do so by visiting the Student Health Center, located on the first floor of the Student Services Building.

COVID-19 antigen tests will be available at the Student Health Center for any student who has been in close contact with an individual who has COVID-19.

If you test positive for COVID-19, please inform your instructors and our college nurse, Dr. Shauna Bigby, at shc@citruscollege.edu. Please see the instructions for COVID-19 positive individuals below.

DAILY PRE-SCREENING

Students attending classes/activities on campus or working on campus are required to download the free Citrus Mobile app and complete the daily pre-screening questions (available through Apple or Google app stores). Prior to arriving at campus, please make sure you answer all of the questions.



If you receive a red pass, please do not attend in-person classes or activities and let your instructors know that you have received a red pass. If you make a mistake answering any of the questions and get a red pass in error, please send an email to shc@citruscollege.edu to have the pass cleared.

You are also required to scan the posted QR code for the classroom or building upon entrance. Please scan the QR code for each classroom or building you enter. This is critical in the event that we have to conduct contact tracing in response to a COVID-19 case. (Please note: the scanner is located at upper left had side of the app identified).

MASK REQUIREMENT

Students are strongly advised to wear a mask indoors when around other people. Please know that currently, as directed by Los Angeles County Department of Public Health, students are not required to wear a mask while in any college classroom or building.

When wearing a mask, please note that fabric/cloth masks do not provide sufficient protection; a medical grade (surgical cloth/paper masks), N-95 and KN-95 mask should be worn. The college will provide you with a mask upon request. Please note that proper use of a mask requires that the mask cover your face and nose at all times while inside a classroom or building.



ENTERING AND EXITING A CLASSROOM

Hand washing with soap and water, or using hand sanitizer, continues to be an effective way to prevent the spread of COVID-19 and is simply a good hygiene practice. When leaving a classroom or other building, please help keep our rooms as clean as possible by making sure you do not leave a used mask behind.



PROTOCOLS FOR STUDENTS WHO ARE COVID-19 POSITIVE

The following is intended to implement the protocol established by the County of Los Angeles Department of Public Health concerning isolation requirements for persons who are COVID-19 positive. The isolation requirements for individuals who are COVID-19 positive, as described below, apply to students regardless of vaccination status or previous COVID-19 infection.

Students who test positive or have been otherwise diagnosed as being infected with COVID-19 (COVID-19 case), must isolate and remain off campus for a period of at least five (5) days from the date symptoms began or from the date of a positive COVID-19 test, whichever is earlier. You may end your isolation and return to classes or other campus activities after five (5) days provided:

1. you receive a negative COVID-19 test (antigen) on day five (5) of the isolation
and
2. you have been fever free (less than 100.4 degrees Fahrenheit) for at least twenty-four (24) hours and symptoms, if present, are improving

In the event you test positive on day five (5) or still have a fever or symptoms are not improving, you must remain in isolation for a total of ten (10) days from the date symptoms began or from the date of a positive COVID-19 test, whichever is earlier.

Individuals who test positive for COVID-19, regardless of the isolation period that is applicable, are required to wear an appropriate face covering (mask) while indoors in any college building for a period of ten (10) days from the date symptoms began or from the date of a positive COVID-19 test, whichever is earlier.

PROTOCOLS FOR STUDENTS WHO ARE IN CLOSE CONTACT WITH A COVID-19 CASE

The following is intended to implement the protocol established by the County of Los Angeles Department of Public Health concerning the steps to be followed by individuals who have been in close contact with a person who is positive for COVID-19. The requirements for individuals who have been in close contact with an individual who is COVID-19 positive, as described below, apply to students regardless of vaccination status or previous COVID-19 infection.

Close contacts do not need to stay away from work or on-campus classes/activities. Any student who has received notice that they have been a close contact with a COVID-19 case must:

1. take a COVID-19 test, available at the Student Health Center, three to five (3-5) days from the date of exposure
2. wear an appropriate face covering (mask) for a period of ten (10) days from the date of exposure
3. monitor for any COVID-19-related symptoms

If you develop symptoms, do not enter a college building until you receive a negative COVID-19 test. If you test positive for COVID-19, you must follow the “Protocols for Students who are COVID-19 Positive” steps above.

VACCINATION INFORMATION

COVID-19 vaccinations and booster shots are strongly recommended, but not required.

For up-to-date information on the available COVID-19 vaccines and where to go to get vaccinated/boosted, please [visit the County of Los Angeles Public Health COVID-19 website](#).