



STUDENT HEALTH CENTER STUDENT SERVICES ANNUAL PROGRAM REVIEW 2015-2016 AND PLAN 2016-2017

Committee Members:

| | | |
|--------------|-----------------|------------------------|
| Shauna Bigby | Laura Shurtleff | Maryann Tolano-Leveque |
|--------------|-----------------|------------------------|

1. Program Mission/Description:

Program Mission and Relationship to the District Mission:

The mission of the Student Health Center is to provide high quality ambulatory care, mental health counseling, comprehensive disease prevention and healthcare education to Citrus College students.

The Student Health Center supports the educational process and the District mission by providing access to quality health services and promoting positive health outcomes for students.

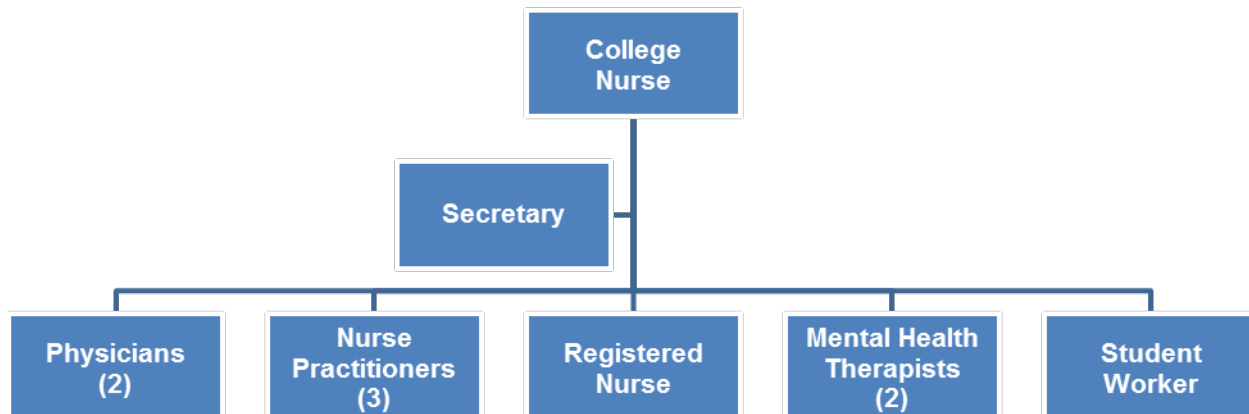
Program Description:

The Student Health Center is funded by student health fees and provides ambulatory care services including pap smears, laboratory services, immunization clinics, sexually transmitted infection testing, physical examinations, and mental health counseling, as well as prescription and over the counter medications. Students are referred to off campus health care providers for treatments that are not provided by the Student Health Center. When classes are in session, the Student Health Center serves students on a walk-in and appointment basis five days a week and one evening per week.

2. Key Functions/Goals:

- Increase student retention and success by providing health services that enhance student wellness
- Promote the development of positive wellness skills needed by students once they leave Citrus College to make optimum health care decisions as to how to use the health care systems resources
- Promote positive health outcomes for students
- Provide high-quality ambulatory care, mental health counseling, comprehensive disease prevention, and

Organization Chart



3. Assessment of Outcomes:

Assessment: *How did you assess the outcomes? What method did you use?*

Result: *What was the product or consequence of your assessment?*

Change: *What will you do differently as a result of what you learned from the assessment?*

Prompt: You may also include an analysis of workload/scope of work, and/or additional data (ARCC/Scoreboard and CCSSE surveys) to address this topic. Use existing data and/or document with a survey.

| Populate with the existing Unit Outcomes | | | | |
|--|---|---|---|--|
| | Outcome | Assessment | Result | Change |
| 1 | Students will increase self-awareness of both mental and physical health by: <ul style="list-style-type: none"> a. Attending self-awareness workshops b. Obtaining blood glucose and cholesterol screening c. Obtaining testing for Sexually Transmitted Infections (STI) CCSP 2.2.1 | <ul style="list-style-type: none"> a. A one hour presentation on self-awareness related topics will be provided to 100 students and a post presentation survey will be given. b. Provide free glucose and cholesterol testing and develop individualized health education plans based on the student test results. c. Provide free STI testing and educate students based on their individual test results. <p style="text-align: center;">See Appendix A.</p> | Of the 100 students surveyed: <ul style="list-style-type: none"> a. Q4. Seventy-five (75) students responded that they learned awareness about the services offered in the Student Health Center. Q5. Eighty students (80) responded that they learned something new about physical health and wellbeing. b. Fifty students (50) received free cholesterol and glucose testing and follow up nutritional counseling from Dietetic Interns from Cal Poly Pomona. c. Fifty (50) students were tested for gonorrhea and chlamydia free of charge. Fifteen (15) of these students tested positive and received treatment for either or both diseases. | <ul style="list-style-type: none"> a. No changes will be implemented. b. The Health Center will continue to measure this Student Learning Outcome (SLO) and further implement a cholesterol challenge with retesting in two to three months for those with elevated numbers. c. No changes will be implemented. |

4. Previous Recommendations/Goals:

Prompt: Provide an outline of the previous recommendations. Insert title of person(s) responsible. Status should be Completed or In Progress. If goal is in progress, explain why under status. Indicate completion date by **month/year**.

| | Previous Recommendation/Goals 2015-2016 | Person(s) Responsible | Status/ Progress | Completed |
|---|---|---|-----------------------------|--------------------------|
| 1 | Provide sensitivity awareness training to faculty and staff. <ul style="list-style-type: none"> How to Assist Students 101: Being Sensitive and Aware of Your Approach CCSP 2.2.1 | College Nurse and Student Health Center Therapist | Completed | Summer 2015 Fall 2015 |
| 2 | Provide training for staff and faculty regarding general behaviors of students with Autism Spectrum Disorder. CCSP 2.2.1 | College Nurse and Student Health Center Therapist | Completed | Spring 2016 |
| 3 | Provide a Grief Counseling Group for students CCSP 2.3.8 | Student Health Center Therapist | Completed | Spring 2016 |

5. New Recommendations/Goals:

Prompt: List new recommendations/goals in order of priority. Indicate estimated completion date by **month/year**. If applicable, reference the Citrus College Strategic Plan (CCSP), CCSP Annual Implementation Plan (AIP) item, and/or the Educational Facilities Master Plan (EFMP) goal, using the following format.

Examples: CCSP 5.3, AIP 5.1.2, and/or EFMP pg. 361

| | New Recommendation/Goals 2016-2017 | Person(s) Responsible | Estimated Completion | Budget Priority |
|-----------------|---|--|---------------------------------|----------------------------|
| 1 st | Implement a smoking cessation and awareness program. CCSP 5.3 | College Nurse and Professional Expert -MD | Fall 2016 Spring 2017 | N/A |
| 2 nd | Explore resources to support the needs of homeless students and post them on the Student Health Center website. CCSP 5.3; AIP 5.1.1 | College Nurse | Fall 2016 | N/A |
| 3 rd | Expand mental health program by: <ul style="list-style-type: none"> Providing mental health awareness seminars to evening students, faculty and staff. Assessing the need to extend evening mental health counseling hours by piloting an evening program. CCSP 5.5; AIP 6.2.4 | Student Health Center Therapist College Nurse | Fall 2016 | N/A |

| Program Projections contained in the Educational & Facilities Master Plan 2011-2020 | Progress toward completion: (please check one) | | |
|--|---|------------------------|--------------------------|
| | Completed | In Progress | Not yet begun |
| Student Health Center | | | |
| EFMP – 1 Increase partnerships with Cal Poly Pomona +20 and the East Valley Health Center to increase services for students, such as x-ray and pharmacy. | X | | |
| EFMP – 2 Collaborate with the Registered Nursing and Licensed Vocational Nursing programs to provide nursing students with experience in services such as flu shot clinics and patient screenings. | X | | |
| EFMP – 3 Expand mental health services. | X | | |

| | | | |
|---|---|--|--|
| EFMP – 4 Partner with Veterans Services to assess and meet demands of this growing population. | X | | |
| EFMP – 5 Modify services, as needed, based on an analysis of success of partnerships with local providers and the Planned Parenthood Association, and results from Student Satisfaction Survey, patient history forms, demographic data and reason for visit collected during each visit. | X | | |

6. Resources Requested:

Prompt: All requests should be linked to new recommendations (above). Include the reference number in the “Discuss impact on goals / SLOs” field below. Use the Link to Planning Key found on the General Budget Guidelines page to complete the Link to Planning column.

Student Health Center

Certificated Personnel (FNIC)

| Position | Discuss impact on goals/SLOs | Cost | Priority 1,2 or 3 | Link to Planning |
|--|---|--|-------------------|------------------------|
| Professional Expert – Registered Nurse | <p>Goal: Expand Professional Expert Registered Nurse hours (not to exceed 35 hours per week at \$38 per hour X 49 weeks = \$65,170).</p> <p>Impact: Expanding Registered Nursing hours will allow for an increase in the number of students being served and allow for a more efficient utilization of Student Health Center advanced practice provider time.</p> <p>New recommendation # N/A</p> | <p>Salary \$65,170 Benefits \$15,315 Health \$-0-</p> <hr/> <p>Total: \$80,485</p> | 2 | CCSP 5.3; EFMP pg. 354 |

Classified Personnel

| Position | Discuss impact on goals/SLOs | Cost | Priority 1,2 or 3 | Link to Planning |
|----------|------------------------------|------|-------------------|------------------|
| N/A | | | | |

Staff Development (Division)

| Item | Discuss impact on goals/SLOs | Cost | Priority 1,2 or 3 | Link to Planning |
|--------------------------------|---|---------|-------------------|----------------------------------|
| Annual Health Care Conferences | <p>Goal: To stay current on health care delivery by attending various seminars and conferences such as the American College Health Foundation and Pre-Med Conference.</p> <p>Impact: To ensure that students using the Student Health Center receive optimal health care.</p> <p>New recommendation # 1 - 4</p> | \$4,000 | 2 | CCSP 5.1, 5.3, 5.6; EFMP pg. 354 |

Facilities (Facilities)

| Describe repairs or modifications needed and location | Discuss impact on goals/SLOs | Cost | Priority 1,2 or 3 | Link to Planning |
|---|------------------------------|------|-------------------|------------------|
| N/A | | | | |

Computers / Software (TeCS)

| Item | Discuss impact on goals/SLOs | Cost | Priority 1,2 or 3 | Link to Planning |
|------|------------------------------|------|----------------------|---------------------|
| N/A | | | | |

Equipment

| Item | Discuss impact on goals/SLOs | Cost | Priority 1,2 or 3 | Link to Planning |
|------|------------------------------|------|----------------------|---------------------|
| N/A | | | | |

Supplies (Division)

| Item | Discuss impact on goals/SLOs | Cost | Priority 1,2 or 3 | Link to Planning |
|------|------------------------------|------|----------------------|---------------------|
| N/A | | | | |

Appendix A

Citrus College Student Health Center Assessment Survey

Please take a few minutes to complete this survey. Your responses are confidential and will help us to improve our outreach measures. Thank you for your time!

1. Gender
 - Male
 - Female
 - Transgender
 - Other

2. Ethnicity
 - Asian
 - Black/African American
 - Latino
 - Middle Eastern
 - Native American
 - Pacific Islander
 - White Caucasian
 - Other

3. Age _____

4. Did you have an increase in awareness about the services offered by the health center following today's presentation?
 - Yes
 - No

5. Did you learn something new about physical health and wellbeing following today's presentation?
 - Yes
 - No

6. Have you ever missed a day of school due to illness?
 - Yes
 - No