

January 2012  
To Our Community:

On behalf of the Measure G Citizens Oversight Committee (COC), it is my pleasure to present our seventh Annual Report. The COC is an open public forum comprised of seven appointed representatives from local taxpayer, business, student, senior, and community groups. Representative appointees serve to monitor and report to their respective communities the progress of work being accomplished at Citrus College. All meetings are scheduled and the public is welcome to attend and participate. Meeting locations, dates and times are posted on the Committee's website (<http://www.citruscollege.edu/finance/bond>).

Through your support of Measure G, Citrus College continues to be a premier learning institution providing a place of great opportunity for our residents. Citrus College's leadership and staff are to be commended for their conscientious management in maximizing Measure G dollars. Your continued support ensures that Citrus College will maintain their leadership role among San Gabriel Valley community colleges.

Sincerely,



Nikki Hull  
Committee Chair, 2011-2012



1000 West Foothill Boulevard • Glendora, California 91741-1899  
Telephone 626.963.0323 • Web Site: [www.citruscollege.edu](http://www.citruscollege.edu)

Citrus College Foundation  
1000 West Foothill Boulevard • Glendora, California 91741-1899  
Telephone 626.914.8825 • Web Site: [www.citruscollege.edu/foundation](http://www.citruscollege.edu/foundation)

Citrus College is an equal opportunity institution.

An important note regarding this annual report of the Measure G Citizens Oversight Committee – Measure G Bond construction funds were not used to prepare, print or distribute this annual report.



Facts about the new Student Services Building

1. The Student Services Building contains 3,214 cubic yards of concrete, or enough to fill 322 concrete trucks! If lined up, those trucks would create a line one-and-a-half miles long!
2. The building contains 844 tons of steel... four times the amount in the Statue of Liberty!
3. The area of glass, (which is double pane, low E and heat reflective) is 11,315 square feet, or enough to equal 75 truckloads of coke bottles!
4. The volume of the building is 695,280 cubic feet—more than the size of three blimps!
5. The area of the roof is 23,176 square feet, or half an acre, equaling the size of 4 tennis courts!
6. In addition, the building contains over 50 miles of wiring, 1,295 light fixtures and 3,240 lamps!



(left to right) Outgoing members Mark Ferrari and Patricia Myers with current Committee Chair Nikki Hull.

2011-2012 Committee Members not pictured: Sharon Lewis, Joseph A. Guarrera, Jon Hart, Helen Storland, Bernard D. Bollinger Jr., and Arthur Corral.

Members of the Board of Trustees

**Mrs. Joanne Montgomery, President**  
Monrovia/Bradbury/Duarte Representative

**Mrs. Susan M. Keith, Vice President**  
Claremont/Azusa/La Verne/Pomona Representative

**Dr. Gary L. Woods, Clerk/Secretary**  
Azusa/Covina/Glendora/Inwindale Representative

**Dr. Edward C. Ortell, Member**  
Duarte/Arcadia/Azusa/Monrovia Representative

**Dr. Patricia Rasmussen, Member**  
Glendora/Azusa/San Dimas Representative

**Ms. Nohemi Camacho**  
Student Representative

**Dr. Geraldine M. Perri**  
Superintendent/President



2011

Citrus Community College District Project Update

2011 Report to Our Community  
by the Measure G Citizens Oversight Committee

Citizens Oversight Committee Membership

This year we gratefully acknowledge the service of two immediate past members, Mark Ferrari and Patricia Myers. They each served two full terms representing their communities on the Measure G Citizen's Oversight Committee. We thank them for their service and wish them the very best in the future.

We also welcome three new members to the COC, Sharon Lewis, Bernard D. Bollinger Jr. and student member Arthur Corral.

Eight Years of Progress

Next year will mark the eighth anniversary of Measure G, signifying 8 years of progress and improvements to the facilities benefitting the students on the Citrus College campus. Keep an eye out for the 2012 Annual Report where we will celebrate and look back at the improvements completed and made possible by the community's approval of Measure G in 2004.

## CITRUS COMMUNITY COLLEGE DISTRICT

Bond Program Financials  
Fiscal Year Ending June 30, 2011

### Statement of Revenues, Expenditures and Change in Fund Balance

<b>REVENUES</b>	
Interest Income	\$ 212,021
<b>TOTAL REVENUES</b>	<b>212,021</b>
<b>EXPENDITURES</b>	
Noninstructional Salaries & Benefits	512,580
Supplies and Materials	17,489
Other Expenses and Services	840,337
Capital Outlay	8,170,578
<b>TOTAL EXPENDITURES</b>	<b>9,540,984</b>
Fund Balance at Beginning of Year	20,311,369
Fund Balance at End of Year	<b>\$ 10,982,406</b>

### Balance Sheet of Bond Construction Fund

<b>ASSETS</b>	
Cash in County Treasury	\$ 11,503,353
Interest Receivable	37,529
<b>TOTAL ASSETS</b>	<b>\$ 11,540,882</b>
<b>LIABILITIES AND FUND BALANCE</b>	
<b>LIABILITIES</b>	
Accounts Payable	\$ 558,476
<b>TOTAL LIABILITIES</b>	<b>558,476</b>
<b>FUND BALANCE</b>	
Designated for Special Purposes	10,982,406
<b>TOTAL FUND BALANCE</b>	<b>10,982,406</b>
<b>TOTAL LIABILITIES AND FUND BALANCE</b>	<b>\$ 11,540,882</b>

To contact Citrus College regarding the Measure G Bond Construction Program, or members of the Citizens Oversight Committee, please write or e-mail Carol R. Horton, Vice President of Finance and Administrative Services, 1000 West Foothill Blvd., Glendora, CA 91741, [chorton@citruscollege.edu](mailto:chorton@citruscollege.edu). To learn more about the Measure G Citizens' Oversight Committee, or to view the COC meeting schedule, minutes, agendas, and other news, please visit the Measure G website at <http://citruscollege.edu>

# Measure G Project Updates

## CITRUS COMMUNITY COLLEGE DISTRICT



### Student Services Building

- Building dedicated in September 2011.
- One-stop shop is the heart and soul of student life
- Student Health Center, Financial Aid, Counseling, Job Placement, Career/Transfer Center, Admissions and Records, Non-Credit Matriculation, EOPS, Disabled Students Center, Service Learning, Testing Center and International Students
- Bookstore Express, Cyber Cafe, office space, meeting rooms, conference rooms, lounges, restrooms and storage



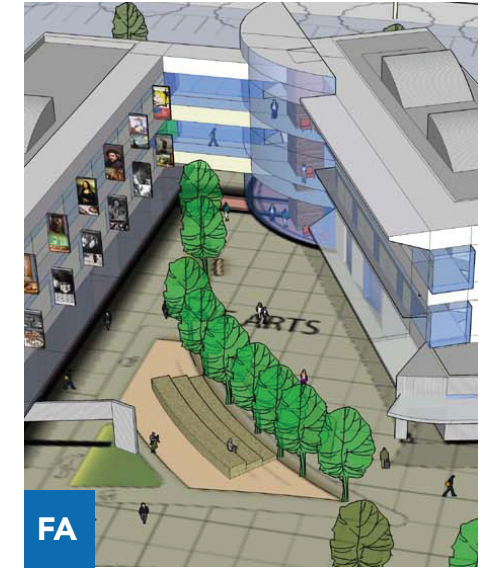
### Administration Building Renovation

- Originally built in 1967
- Houses Finance and Administrative Services, Human Resources, Academic Affairs, Research, and the President/Superintendent's Office
- The Advancement offices will be relocated to this building
- Improved administrative and Board meeting spaces
- Construction commenced October 2011 and completion projected for fall 2013



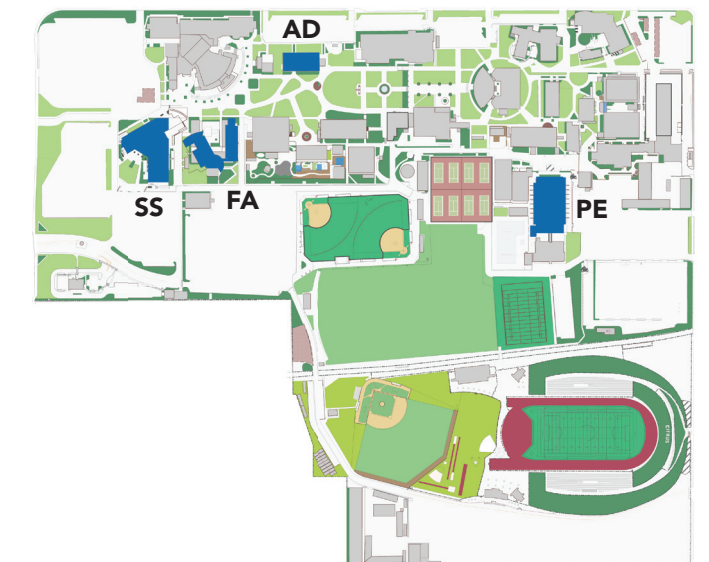
### Main Gym Renovation

- Project completed February 2011
- Originally built in 1954
- New showers and locker rooms for sports teams and coaches
- New equipment room and training room
- Renovated Athletic Director's and coaches offices



### Fine Arts Building

- Lecture rooms, art classrooms, computer labs
- Photography labs, printing labs
- Ceramics studio
- Painting studios, drawing studios and offices



### Other Improvements Underway

- Architectural plans have been commenced for remodel of the Technology Center to accommodate the Esthetician Program
- Construction on the East campus Restroom building began March 2011 with projected completion by early 2012