



Savvy Travel Tips

File:TravelTips-II-08.doc

Date : March 12, 2008
Tom Gerfen, Professor

Notes:

Hello

Let's Talk Travel

Introduction

Travel Tips

By Land, Sea, Air and everything in-between

Passports - NEEDED more now than before

New requirements for Passports

New type of Passports Computer chips, scan reading

Canada - Mexico - YES

Check at your City Halls

Plan

Where, How much, money, time,

or Out of the Blue

Surprise?

Flexible?

PACKING

Repack into smaller containers

Plastic Bags

Roll up

Sox in shoes

Use and leave

Electrical Adapters

Razors & spare

Money belt

Umbrella & head covering

Locks Plastic ties / Locks Key the same (look for TSA on lock)

<http://www.magellans.com>

Travel Supplies

Photo

Digital Cameras

Extra memory (1 or 2 GB cards)

Film

Film bags for X-rays

Cameras - Regular and Throw away



Savvy Travel Tips

File:TravelTips-II-08.doc

Date : March 12, 2008
Tom Gerfen, Professor

Notes:

Senior Citizens

Special Rates	ASK	(AA / AARP / ????)
Airfare		Restaurants
AARP		Medical - Special Needs
Elder hostel		

Air Travel

Know who flying the plane !!!

What air line?

Reservations

321 day out AIR

On-line vs phone calls			
Extra cost \$ \$ \$	Phone	at Airport	ON-Line
Special Needs	Meals		
Cash / No cash on board	(New cashless on board)		
Pets & Kids	Refunds		

E-Tickets All carriers Disneyland?

What are they and how do you use them?

Pluses	Minus
--------	-------

Parking, Carry On , Luggage

the **3 - 1 - 1** rule

Check weight limits by airline

Airlines are now charging for checked luggage ...

Check in at some hotels (Call / Ask)

Ship your luggage before your flight

www.Firstluggage.com	800-224-5781
www.sportsexpress.com	877-235-5467

How to get to the airport

Parking	Rent-a-car
Fly-a-way busses	

Fares

Best Price	Cheap Ticket
Discounts – Consolidators	
Internet sites (see URL at end of handouts / notes)	



Savvy Travel Tips

File:TravelTips-II-08.doc

Date : March 12, 2008
Tom Gerfen, Professor

Notes:

Trip Insurance
Health Insurance
Baggage Insurance

Take Photos of you luggage – before you go

Language, Currency & Customs (Gestures)

Credit Cards - Pins Numbers - *try 2 + months before you use*
Travel numbers – call credit card company

Call Credit Card company & tell them you are out of the country between dates

Internet lookup for Rates of Exchanges <http://http://www.oanda.com/>
Pocket Cheat sheet #####

Language, Currency & Customs (Gestures)

Travel Documents

Passports <http://www.travel.state.gov/passport>

Visas

Passport Expeditors

Copies of Prescriptions

Credit Cards vs. Cash **Extra FEES for Credit Cards out of country**

\$ 1.00 bills

"New money / Old money"- New \$ 5.00 \$ 20.00 & \$ 10.00 U S bills

clean money

Tipping in foreign countries

Before you leave

Make copies of itinerary & leave with someone

Copies of your Passport & credit cards

Mail & Newspapers - S T O P

Pay bills, keep change accounts to a minimum #####

Lights on timer

Arrangements with Neighbors

Have a neighbor park their car in your driveway a few days #####

Confirm flights if necessary

Notify family about plans

Phone Numbers

Check you health insurance company



Savvy Travel Tips

File:TravelTips-II-08.doc

Date : March 12, 2008
Tom Gerfen, Professor

Notes:

Packing & Wardrobe

Leave good jewelry at home

Carry-on - One to two days clothing & Toothbrush & medicine

Wash n wear

Color coordinator

Conformable shoes **(don't buy just before the trip)**

Cosmetics

1 / 2 rule

Layered look

Be aware of weather

Cross pack some closes in your travel partner (X Pack)

Communications

E-mail

Pre trip set up address links in a address book

Telephones

Use pay phones Calling Cards

At the dock not the boat

Mail

Cost of Stamps

Address labels & Pre addressed #####

Hotels

Beware of extra fees / service

(Phones / spas) ask at check in about

Prices (Rack Rates)

Ratings ♦♦♦♦♦

Frequent Guest Programs

Credit Cards

Check In / Check Out (times)

Time Shares

It's not an investment - just an opportunity to stay at a nice place

Annual Fees + Taxes \$\$\$\$

Guest vs. Owner



Savvy Travel Tips

File:TravelTips-II-08.doc

Date : March 12, 2008
Tom Gerfen, Professor

Notes:

Transportation

Safety

Count the number of doors from your room to an exit
Look for the Exits on the plans, busses and ships

BE PREPARED

Check with you health provider about shots and vaccinations
and on the WEB at the state department
for need vaccinations for the destination

Don't Sweat it - Just do it !!!

EXIT Fees

Tours and excursion Option - Add on
Senior / Elder Hostel, College Campus
<http://http://www.elderhostel.org/>

Traveling Alone.

Little white lies to tell to be safe

Many tours welcome single traveler's BUT
Add a single supplement to price
Club Med caters to singles
There are travel books aimed at single women who like to travel
Elder hostel is also open to singles
Some tour's to Italy & Spain have no single supplement
Singles need to use extra caution

Notes:

Helping those with disabilities

American Society of Travel Agents' ASTA

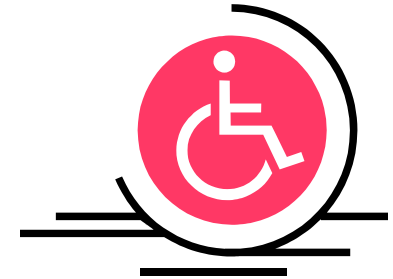
www.asta.org

Society for Accessible Travel & Hospitality SATH

www.sath.org

Cruise Lines International Association

www.cruising.org



####

Cruise Lines websites listing (Need to click through the 10+ pages)

www.latimes.com/cruiselists



Savvy Travel Tips

Date : March 12, 2008
Tom Gerfen, Professor

File:TravelTips-II-08.doc

Notes:

WEB sites http://

A. <http://www.kayak.com>

B. <http://www.farecast.com/>

C. <http://www.travelzoo.com>

D. <http://www.orbitz.com/>

E. <http://www.cheaptickets.com>

F. <http://www.biztravel.com>

G. <http://www.priceline.com>

H. <http://www.ah-mazing.com>

I. <http://www.bobs cruises.com>

J. <http://www.johnnyjet.com/home.asp>

K. <http://seat61.com/>

L. <http://www.cruisecritic.com/>

M. <http://www.flyertalk.com/>

N. <http://www.theinternettraveler.com/>

O. <http://www.unclaimedbaggage.com>

P. <http://www.travelocity.com/>

Q. <http://www.seatguru.com>

R. <http://www.frommers.com>

S. <http://travel.airwise.com/>

T. <http://vantagetraavel.com/>

U. <http://awardsecrets.com/wf/index.asp>

V. <http://www.myvactionpassport.com/>

W. <http://www.airfarewatchdog.com/>

X. <http://joesentme.com/>



Savvy Travel Tips

Date : March 12, 2008
Tom Gerfen, Professor

File:TravelTips-II-08.doc

Notes:

- Y. <http://www.flightstats.com/go/Home/home.do>
- Z. <http://www.creditcards.com/>
- AA. <http://eventful.com/>
- BB. <http://www.usatoday.com/travel>
- CC. <http://megabus.com/us/>
- DD. <http://www.smartertravel.com/>
- EE. <http://www.frequentflyer-miles.com/>
- FF. <http://www.lastminutecruises.com/>
- GG. <http://www.cruise411.com/>
- HH. <http://www.elderhostel.org/>
- II. <http://www.travelofamerica.com/>

<https://www.annualcreditreport.com>

<http://www.trave.state.gov/>

<http://www.travel.state.gov/passport>

<http://www.urgentpassport.com/>



Savvy Travel Tips

File:TravelTips-II-08.doc

Date : March 12, 2008
Tom Gerfen, Professor

Notes:

More WEB Sites

<http://www.magellans.com>

Travel Supplies ****

<http://www.tripit.com>

Organizing Travel Details ****

<http://www.expertflyer.com>

Arranging tricky itineraries

<http://www.yapta.com>

Getting the inside scoop

<http://www.milemaven.com>

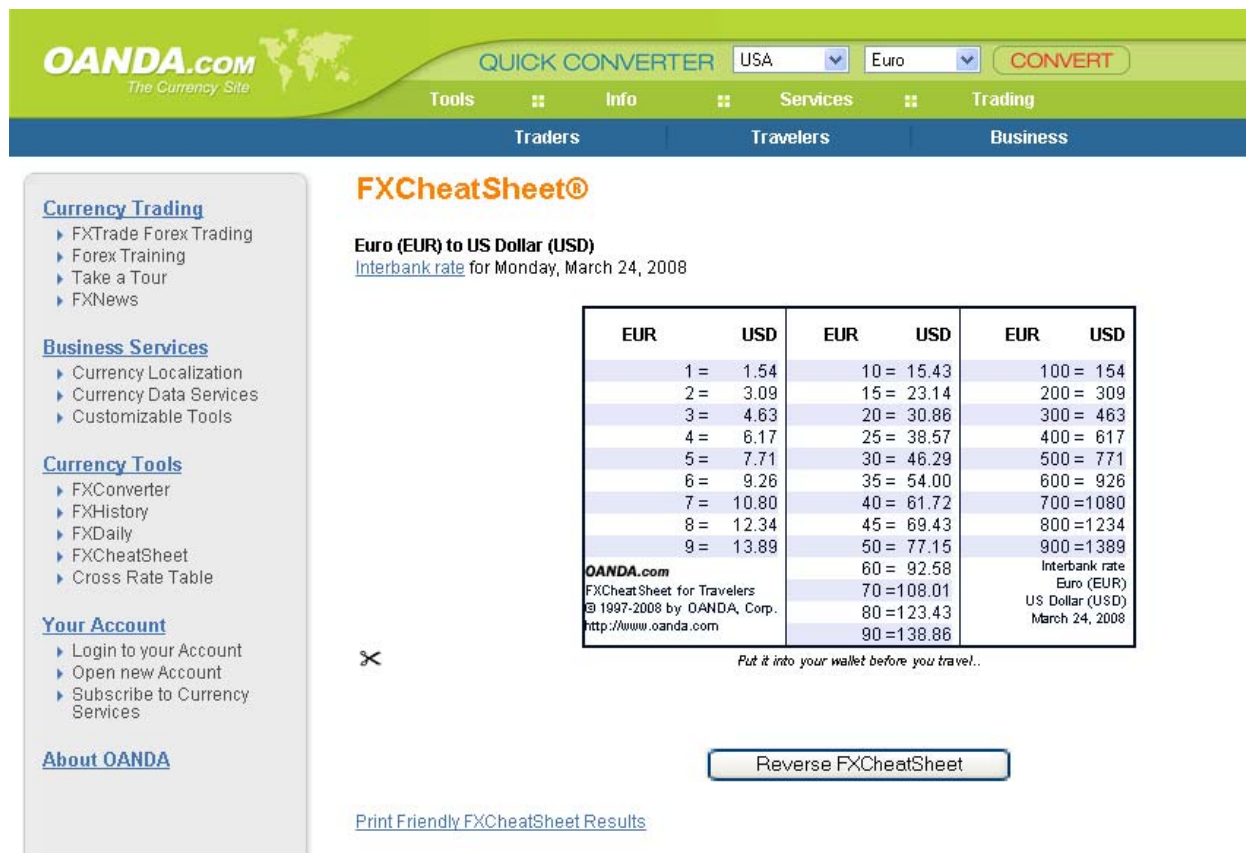
Maxing out your miles

<http://www.momondo.com/flights.aspx>

Searching price > 450 sites

Notes:

<http://http://www.oanda.com/>



OANDA.com
The Currency Site

QUICK CONVERTER USA Euro CONVERT

Tools Info Services Trading

Traders Travelers Business

FXCheatSheet®

Euro (EUR) to US Dollar (USD)
Interbank rate for Monday, March 24, 2008

EUR	USD	EUR	USD	EUR	USD
1 =	1.54	10 =	15.43	100 =	154
2 =	3.09	15 =	23.14	200 =	309
3 =	4.63	20 =	30.86	300 =	463
4 =	6.17	25 =	38.57	400 =	617
5 =	7.71	30 =	46.29	500 =	771
6 =	9.26	35 =	54.00	600 =	926
7 =	10.80	40 =	61.72	700 =	1080
8 =	12.34	45 =	69.43	800 =	1234
9 =	13.89	50 =	77.15	900 =	1389
		60 =	92.58	Interbank rate	
		70 =	108.01	Euro (EUR)	
		80 =	123.43	US Dollar (USD)	
		90 =	138.86	March 24, 2008	

OANDA.com
FXCheatSheet for Travelers
© 1997-2008 by OANDA, Corp.
http://www.oanda.com

Put it into your wallet before you travel..

Reverse FXCheatSheet

Print Friendly FXCheatSheet Results

USD	EUR	USD	EUR	USD	EUR
1 =	0.65	10 =	6.48	100 =	65
2 =	1.30	15 =	9.72	200 =	130
3 =	1.94	20 =	12.95	300 =	194
4 =	2.59	25 =	16.19	400 =	259
5 =	3.24	30 =	19.43	500 =	324
6 =	3.89	35 =	22.67	600 =	389
7 =	4.53	40 =	25.91	700 =	453
8 =	5.18	45 =	29.15	800 =	518
9 =	5.83	50 =	32.38	900 =	583
		60 =	38.86	Interbank rate	
		70 =	45.34	US Dollar (USD)	
		80 =	51.82	Euro (EUR)	
		90 =	58.29	March 24, 2008	

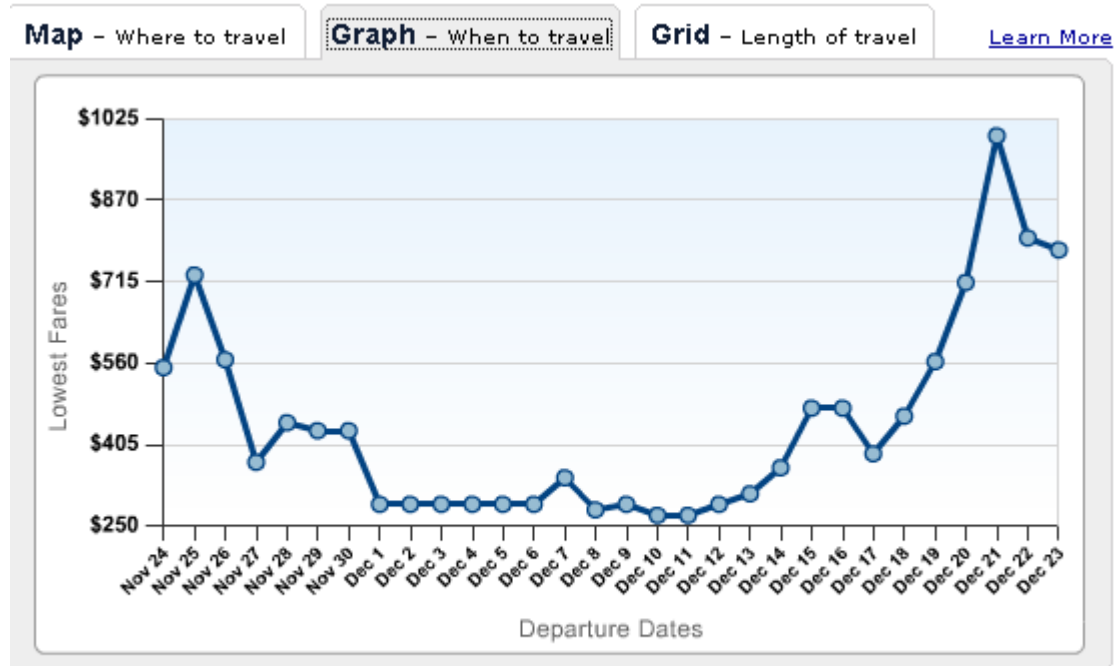
OANDA.com
FXCheatSheet for Travelers
© 1997-2008 by OANDA, Corp.
http://www.oanda.com

Put it into your wallet before you travel..

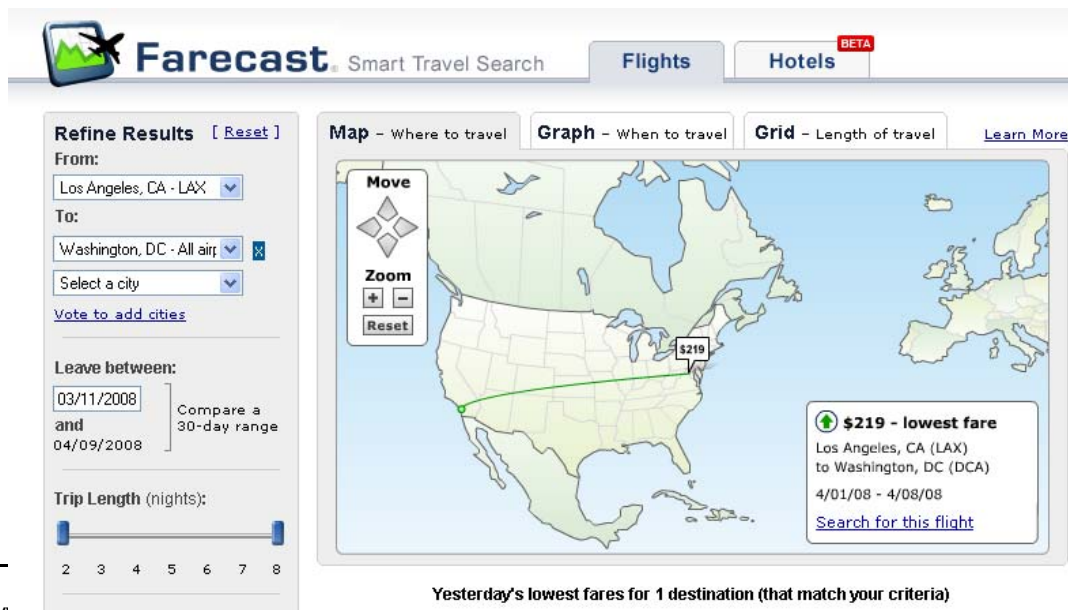
Notes:

<http://www.farecast.com/>

LAX to HNL → Hawaii in late November – December 2007



Yesterday's lowest fares for 210 date combinations (that match your criteria)



Farecast Smart Travel Search

Flights Hotels ^{BETA}

Refine Results [Reset]

From: Los Angeles, CA - LAX

To: Washington, DC - All airports

Leave between: 03/11/2008 and 04/09/2008

Trip Length (nights): 2-8

Map - Where to travel Graph - When to travel Grid - Length of travel

\$219 - lowest fare
Los Angeles, CA (LAX) to Washington, DC (DCA)
4/01/08 - 4/08/08

Yesterday's lowest fares for 1 destination (that match your criteria)



Savvy Travel Tips

File:TravelTips-II-08.doc

Date : March 12, 2008
Tom Gerfen, Professor

Notes: