

Success Rate Comparisons of EOP&S versus Non-EOP&S Students in English and Math Courses

Prepared by Citrus College
Office of Institutional Research

The purpose of this study is to compare the success rates of English and Math courses between EOP&S students and Non-EOP&S students in Citrus College. Course success is defined as students achieving either A, B, C, or CR at the end of the semester. Scores such as D, F, W, NC, on the other hand, were counted as unsuccessful. Three academic years, the 2005-2006, 2006-2007, and 2007-2008 academic year, were included in the data analysis. At the same time, the included English courses were ENGL 30, ENGL 40, and ENGL 100, and the included Math courses were Math 17, Math 20, Math 29, and Math 130.

Table 1: The Overall Success Rate Comparisons between EOP&S and Non-EOP&S students over Three Years

Semester	Successful	Unsuccessful	Total	Success-rate
Fall05				
EOP&S	235	290	525	44.8%
Non-EOP&S	1579	1455	3034	52.0%
Fall06				
EOP&S	322	296	618	52.1%
Non-EOP&S	1692	1369	3061	55.3%
Fall07				
EOP&S	313	259	572	54.7%
Non-EOP&S	1888	1472	3360	56.2%
Spring06				
EOP&S	212	237	449	47.2%
Non-EOP&S	1352	1298	2650	51.0%
Spring07				
EOP&S	225	270	495	45.5%
Non-EOP&S	1324	1254	2578	51.4%
Spring08				
EOP&S	239	254	493	48.5%
Non-EOP&S	1363	1210	2573	53.0%

Table 1 shows that the EOP&S students had a lower overall success rate in the included English and Math courses for all the three academic years in comparison with the Non-EOP&S students. Such disparity ranges from 1.5% in Fall 07 to 7.2% in Fall 05. This trend can also be seen in Figure 1 and Figure 2. Figure 1 displays the Overall Success Rate Comparisons between EOP&S and Non-EOP&S students in three Fall Semesters, and Figure 2 displays the Overall Success Rate Comparisons between EOP&S and Non-EOP&S students in three Spring Semesters. In each of the six semesters, EOP&S students had a lower success rate compared to Non-EOP&S students.

Figure 1: The Overall Success Rate Comparisons between EOP&S and Non-EOP&S students in Fall Semesters 2005-2007

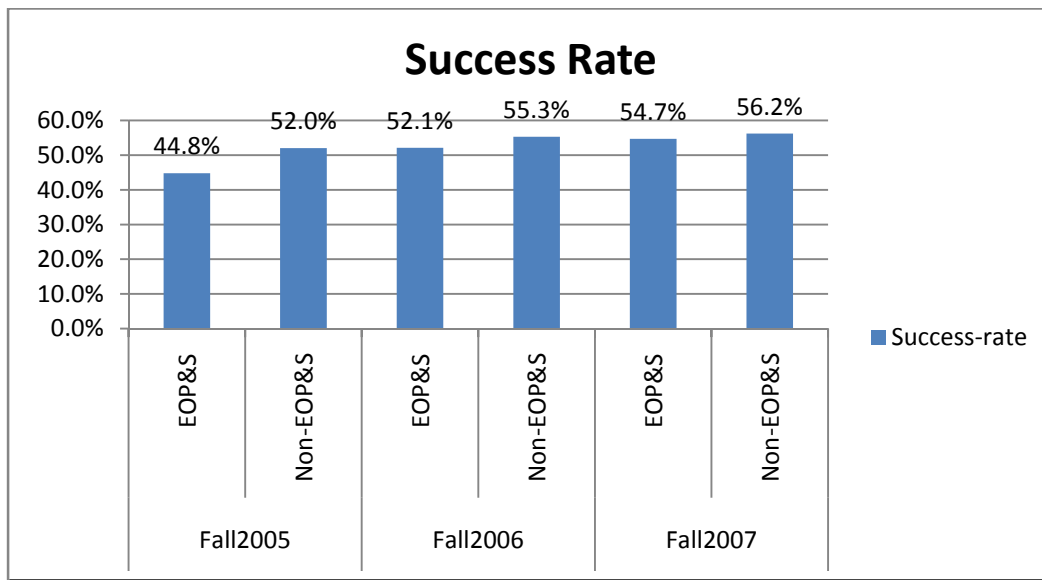


Figure 2: The Overall Success Rate Comparisons between EOP&S and Non-EOP&S students in Spring Semesters 2005-2007

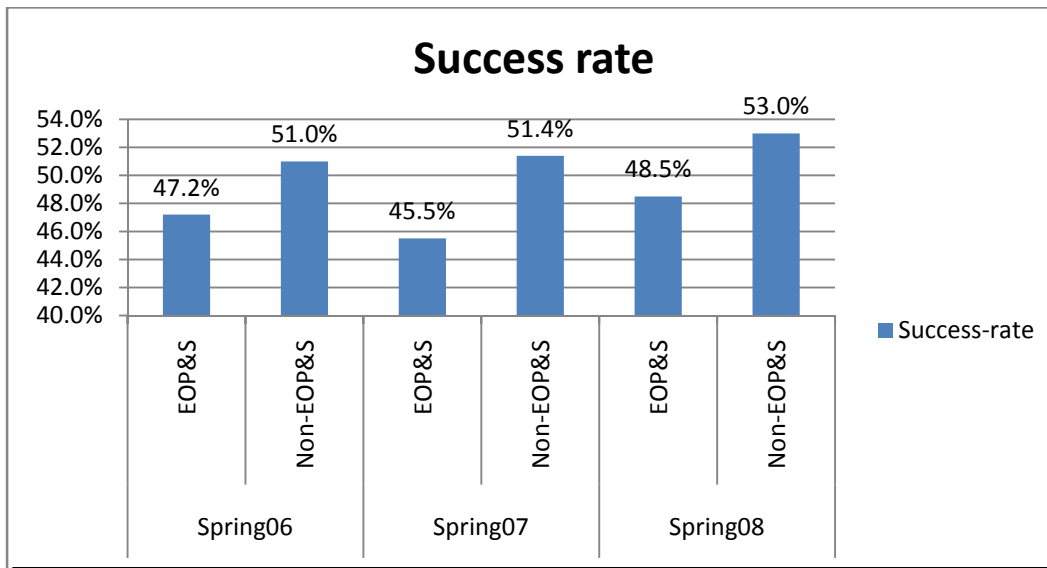


Table 2: The Success Rate Comparisons between EOP&S and Non-EOP&S students in English Courses over Three Years

	ENGL030		ENGL040		ENGL100	
	EOP&S	Non-EOP&S	EOP&S	Non-EOP&S	EOP&S	Non-EOP&S
Fall05	31.9%	53.7%	45.1%	62.1%	53.8%	61.7%
Fall06	61.1%	64.5%	56.7%	62.4%	61.7%	61.2%
Fall07	56.5%	63.5%	59.8%	56.5%	73.1%	70.5%
Spring06	46.7%	54.6%	43.4%	55.8%	57.6%	56.0%
Spring07	-	-	44.0%	51.3%	64.7%	65.3%
Spring08	50.0%	62.8%	52.9%	55.3%	63.7%	64.9%

Table 2 further breaks the success rate comparisons for all the included English courses. The disparity between EOP&S students and Non-EOP&S students in the success rates is still evident and it quite matches with the overall success rates listed in Table 1, only with some exceptions. Such trend can also be seen in Figure 3 and Figure 4. Figure 3 displays the English Courses Success Rate Comparisons between EOP&S and Non-EOP&S students in three Fall Semesters, and Figure 4 displays the English Courses Success Rate Comparisons between EOP&S and Non-EOP&S students in three Spring Semesters. In almost every semester and every English course, EOP&S students had a lower success rate compared to Non-EOP&S students.

Figure 3: The English Courses Success Rate Comparisons between EOP&S and Non-EOP&S students in Fall Semesters 2005-2007

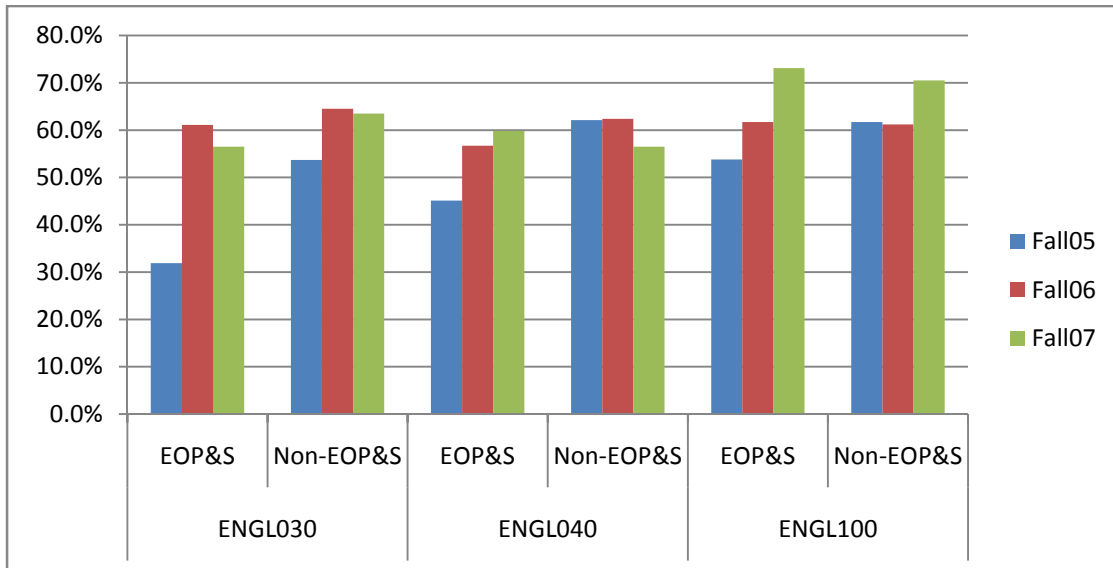


Figure 4: The English Courses Success Rate Comparisons between EOP&S and Non-EOP&S students in Spring Semesters 2005-2007

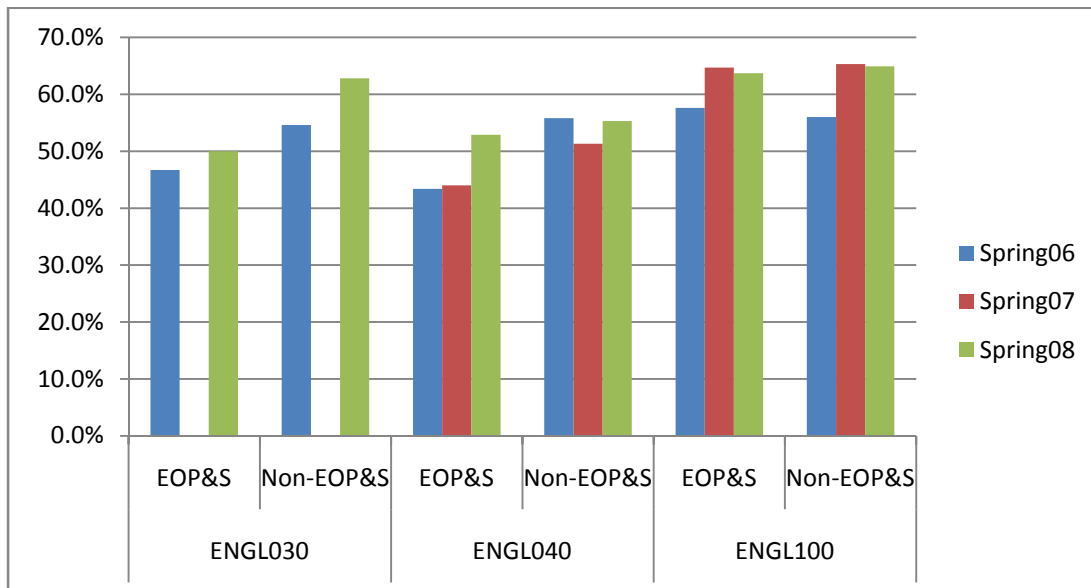


Table 3: The Success Rate Comparisons between EOP&S and Non-EOP&S students in Math Courses over Three Years

	MATH017		MATH020		MATH029		MATH130	
	EOP&S	Non-EOP&S	EOP&S	Non-EOP&S	EOP&S	Non-EOP&S	EOP&S	Non-EOP&S
Fall05	50.0%	73.6%	36.7%	47.6%	48.3%	47.5%	44.7%	40.7%
Fall06	52.7%	62.4%	50.6%	60.7%	48.4%	57.4%	40.0%	39.4%
Fall07	58.7%	71.1%	49.4%	50.7%	43.3%	50.6%	46.6%	44.4%
Spring06	30.0%	59.8%	55.6%	53.4%	37.2%	45.2%	47.5%	43.9%
Spring07	58.9%	62.5%	32.8%	50.2%	36.9%	52.1%	31.8%	38.0%
Spring08	43.2%	71.9%	38.7%	51.0%	47.4%	46.1%	38.2%	40.9%

Table 3 further breaks the success rate comparisons for all the included Math courses. The disparity between EOP&S students and Non-EOP&S students in the success rates is still evident and fairly matches with the overall success rates listed in Table 1, only with a few exceptions. For example, EOP&S students actually had a higher success rate in MATH130 during all the fall semesters. This trend can also be seen in Figure 5 and Figure 6. Figure 5 displays the Math Courses Success Rate Comparisons between EOP&S and Non-EOP&S students in three Fall Semesters, and Figure 6 displays the Math Courses Success Rate Comparisons between EOP&S and Non-EOP&S students in three Spring Semesters. In the majority of the semesters and the majority of Math courses, EOP&S students had a lower success rate compared to Non-EOP&S students.

Figure 5: The Math Courses Success Rate Comparisons between EOP&S and Non-EOP&S students in Fall Semesters 2005-2007

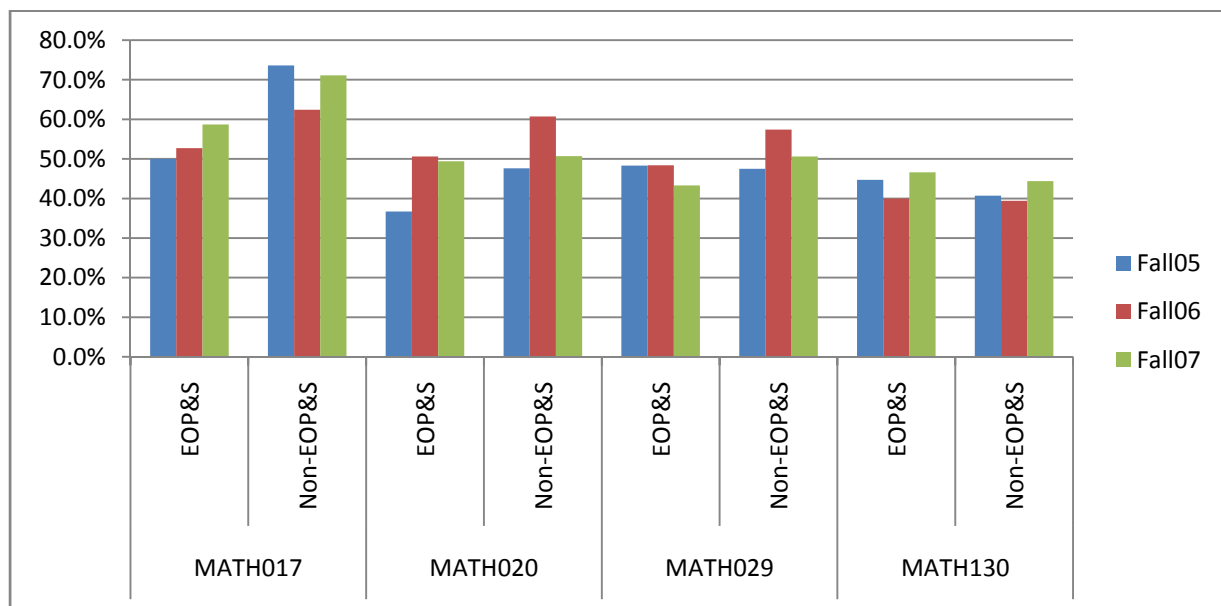
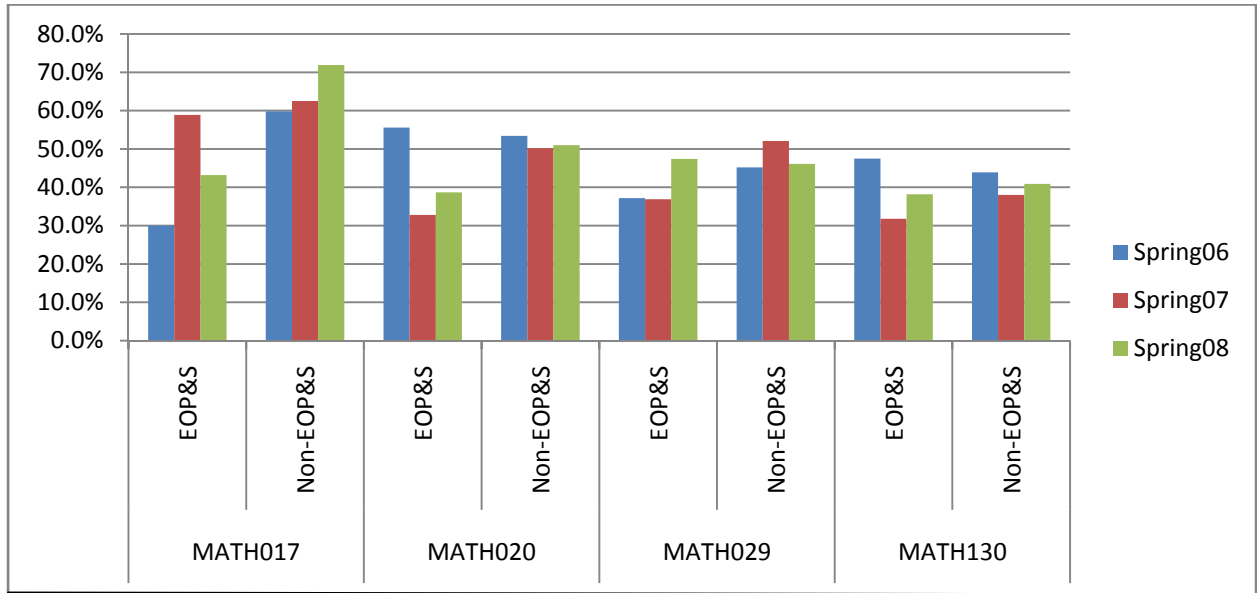


Figure 6: The Math Courses Success Rate Comparisons between EOP&S and Non-EOP&S students in Spring Semesters 2005-2007



In a conclusion, EOP&S students had a lower success rate in the included English and Math courses over the three academic years in comparison with Non-EOP&S students.

Notes:

1. In both 05-06 and 06-07 years, ENGL030 was called as COLL033.

Appendix: Data Tables

057	1814	1745	3559	51.0%
1	235	290	525	44.8%
ENGL 030	15	32	47	31.9%
ENGL 040	37	45	82	45.1%
ENGL 100	57	49	106	53.8%
MATH 017	5	5	10	50.0%
MATH 020	33	57	90	36.7%
MATH 029	42	45	87	48.3%
MATH 130	46	57	103	44.7%
2	1579	1455	3034	52.0%
ENGL 030	72	62	134	53.7%
ENGL 040	337	206	543	62.1%
ENGL 100	401	249	650	61.7%
MATH 017	39	14	53	73.6%
MATH 020	199	219	418	47.6%
MATH 029	196	217	413	47.5%
MATH 130	335	488	823	40.7%
063	1564	1535	3099	50.5%
1	212	237	449	47.2%
ENGL 030	14	16	30	46.7%
ENGL 040	33	43	76	43.4%
ENGL 100	53	39	92	57.6%
MATH 017	6	14	20	30.0%
MATH 020	30	24	54	55.6%
MATH 029	29	49	78	37.2%
MATH 130	47	52	99	47.5%
2	1352	1298	2650	51.0%
ENGL 030	53	44	97	54.6%
ENGL 040	280	222	502	55.8%
ENGL 100	318	250	568	56.0%
MATH 017	70	47	117	59.8%
MATH 020	149	130	279	53.4%
MATH 029	182	221	403	45.2%
MATH 130	300	384	684	43.9%
067	2014	1665	3679	54.7%
1	322	296	618	52.1%
ENGL 030	22	14	36	61.1%
ENGL 040	80	61	141	56.7%
ENGL 100	58	36	94	61.7%
MATH 017	29	26	55	52.7%
MATH 020	41	40	81	50.6%

	MATH 029	44	47	91	48.4%
	MATH 130	48	72	120	40.0%
2		1692	1369	3061	55.3%
	ENGL 030	71	39	110	64.5%
	ENGL 040	329	198	527	62.4%
	ENGL 100	401	254	655	61.2%
	MATH 017	121	73	194	62.4%
	MATH 020	207	134	341	60.7%
	MATH 029	245	182	427	57.4%
	MATH 130	318	489	807	39.4%
073		1549	1524	3073	50.4%
1		225	270	495	45.5%
	ENGL 040	37	47	84	44.0%
	ENGL 100	75	41	116	64.7%
	MATH 017	33	23	56	58.9%
	MATH 020	22	45	67	32.8%
	MATH 029	24	41	65	36.9%
	MATH 130	34	73	107	31.8%
2		1324	1254	2578	51.4%
	ENGL 040	224	213	437	51.3%
	ENGL 100	395	210	605	65.3%
	MATH 017	90	54	144	62.5%
	MATH 020	130	129	259	50.2%
	MATH 029	203	187	390	52.1%
	MATH 130	282	461	743	38.0%
077		2201	1731	3932	56.0%
1		313	259	572	54.7%
	ENGL030	26	20	46	56.5%
	ENGL040	58	39	97	59.8%
	ENGL100	68	25	93	73.1%
	MATH017	27	19	46	58.7%
	MATH020	38	39	77	49.4%
	MATH029	42	55	97	43.3%
	MATH130	54	62	116	46.6%
2		1888	1472	3360	56.2%
	ENGL030	120	69	189	63.5%
	ENGL040	309	238	547	56.5%
	ENGL100	498	208	706	70.5%
	MATH017	155	63	218	71.1%
	MATH020	191	186	377	50.7%

	MATH029	227	222	449	50.6%
	MATH130	388	486	874	44.4%
083		1602	1464	3066	52.3%
1		239	254	493	48.5%
	ENGL030	22	22	44	50.0%
	ENGL040	37	33	70	52.9%
	ENGL100	65	37	102	63.7%
	MATH017	16	21	37	43.2%
	MATH020	24	38	62	38.7%
	MATH029	36	40	76	47.4%
	MATH130	39	63	102	38.2%
2		1363	1210	2573	53.0%
	ENGL030	86	51	137	62.8%
	ENGL040	213	172	385	55.3%
	ENGL100	374	202	576	64.9%
	MATH017	97	38	135	71.9%
	MATH020	131	126	257	51.0%
	MATH029	166	194	360	46.1%
	MATH130	296	427	723	40.9%