

# WILDLAND RESOURCES AND FORESTRY

## Overview

The Citrus College Wildland Resources and Forestry program prepares students for a variety of pre-professional careers and a transferrable curriculum into a four-year university, leading to a baccalaureate degree in such areas as biology, botany, conservation, ecology, education, environmental science, forestry, horticulture, organismal biology, natural resources, rangeland management, recreation, soil science, wildland fire management and wildlife management.

The wildland resources and forestry student is prepared to enter graduate or professional programs/careers of specialized study/work in such areas as agriculture, conservation biology, resource ecology, entomology, environmental protection, fisheries and wildlife, forest management, hydrology, limnology, natural resource, naturalist, park ranger, soil science, silvicultural practice, wildlife law enforcement, and zoology.

## Fast Facts

- Upon completion, the student may earn:
  - **Certificate of Achievement** in Wildland Resources and Forestry
  - **Associate of Science Degree** in Wildland Resources and Forestry
- ***Complete the certificate in as little as three semesters!***
- Day and evening classes
- Cooperative education to obtain **internship hours** with local agencies/organizations
- Citrus College is the only college in Southern California with a forestry-related program

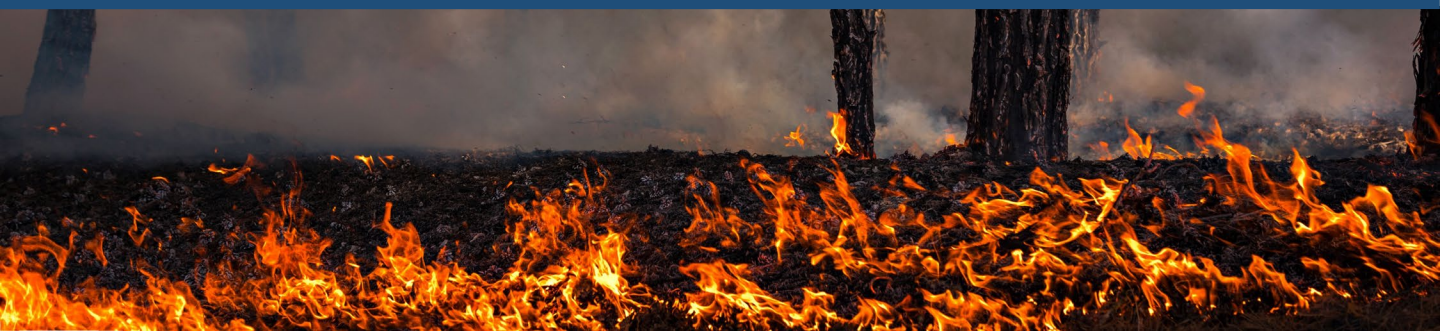
*Do you want a fulfilling outdoor career?*



## Certificate of Achievement Required Courses:

- FOR 101: Introduction to Forestry
- FOR 102: Introduction to Forestry Ecology
- FOR 103: Plant Identification
- FOR 104: Introduction to Outdoor Recreation
- FOR 105: Wildland Fire Management
- FOR 106: Principles of Wildlife Management and Ecology
- ESCI 180: Introduction to Geographical Information Systems

*Do you want to make a positive impact on the environment?*





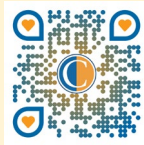
# WILDLAND RESOURCES AND FORESTRY



## Admission

Admission to Citrus College is open to high school graduates and any person 18 years or older. To enroll, register online at [www.citruscollege.edu/applyregister](http://www.citruscollege.edu/applyregister)

## Natural, Physical and Health Sciences Division



1000 W. Foothill Blvd.  
Glendora, CA 91741  
626-914-8789

[forestry@citruscollege.edu](mailto:forestry@citruscollege.edu)

For more information on how to join the wildland resources and forestry program, visit [www.citruscollege.edu/academics/programs/for](http://www.citruscollege.edu/academics/programs/for)

*Citrus College is an Equal Opportunity Institution.  
Citrus College publications are available in an alternate format upon request by persons with verifiable disabilities.*

