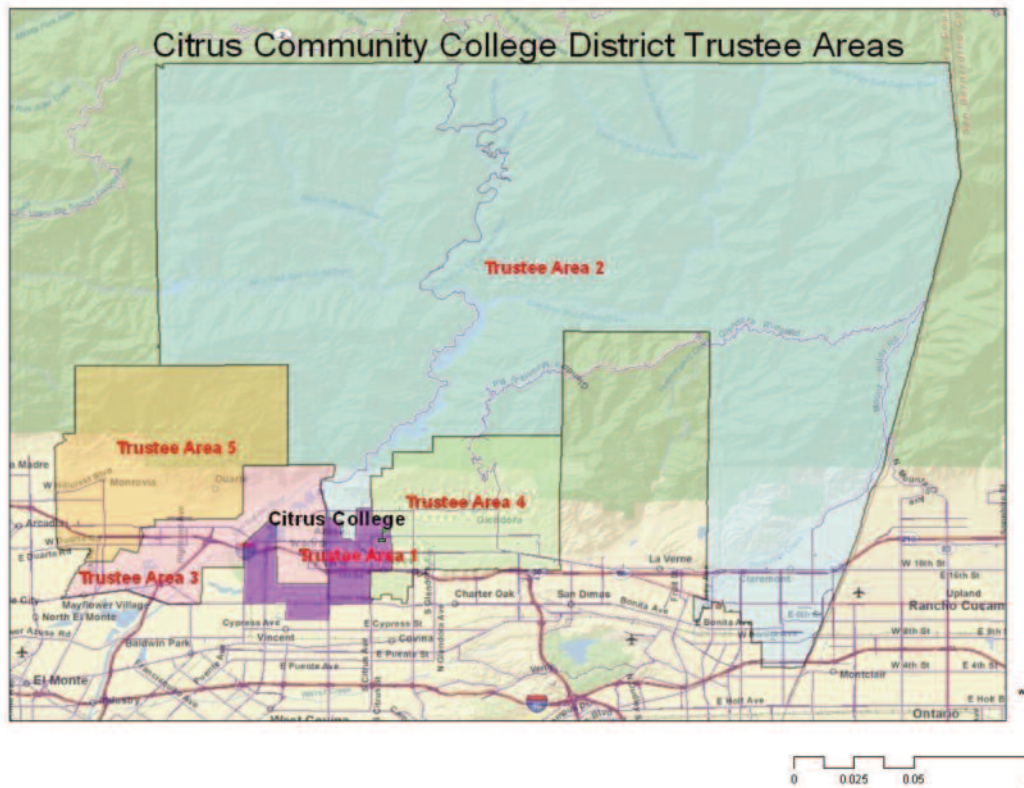


**Figure 1**  
**Citrus Community College District**



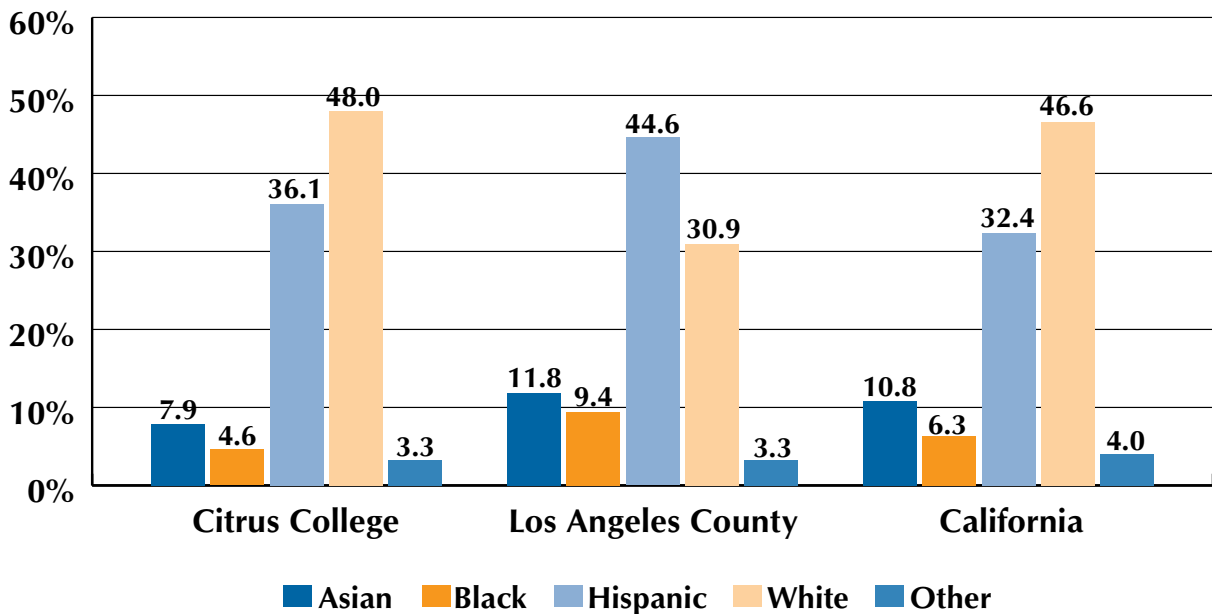
	<b>Board Representative</b>	<b>Cities</b>
<b>Area 1</b>	Dr. Gary L. Woods	<b>Azusa/Covina/Glendora/Irwindale</b>
<b>Area 2</b>	Mrs. Susan M. Keith	<b>Claremont/Azusa/La Verne/Pomona</b>
<b>Area 3</b>	Dr. Edward C. Ortell	<b>Duarte/Arcadia/Azusa/Monrovia</b>
<b>Area 4</b>	Dr. Patricia Rasmussen	<b>Glendora/Azusa/San Dimas</b>
<b>Area 5</b>	Mrs. Joanne Montgomery	<b>Monrovia/Bradbury/Duarte</b>

# Student Demographics

## Ethnic Composition of the District

About 36 percent of Citrus Community College District residents are of Hispanic origin. As shown in the figure below, Citrus College has a lower concentration of Hispanic residents than Los Angeles County, but a slightly higher concentration than that of California.

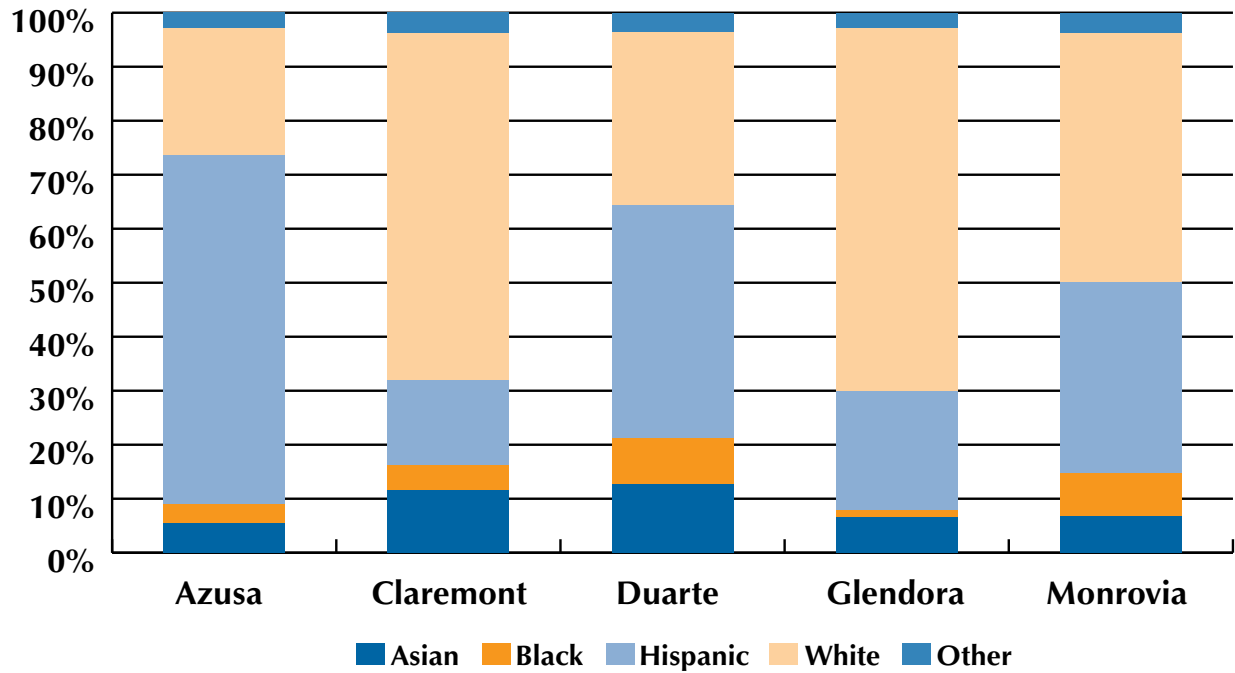
**Figure 2**  
**Citrus Community College District Residents by Ethnicity – 2000**



Source: Census 2000

Azusa and Duarte are the two cities within the Citrus College service area with the highest population of Hispanic residents, followed by Monrovia, Glendora and Claremont.

**Figure 3**  
**Citrus Community College District Residents by City – 2000**



Source: Census 2000

# Educational Attainment

In general, the highest level of education attained by adults 25 years or older is higher in the Citrus Community College District than in Los Angeles County and California. This is true for residents with professional degrees, master’s degrees, associate degrees, and residents attending some college for one or more years. The percent of residents with a bachelor’s degree is slightly lower in the Citrus Community College District than California, but higher than Los Angeles County.

**Table 1**  
**Educational Attainment**

Education Attainment	Citrus Community College District	Los Angeles County	California
Less than 9th grade	9.8%	16.2%	11.4%
9th to 12th grade, no diploma	11.0%	13.8%	11.7%
High school graduate (includes equivalency)	19.6%	18.8%	20.1%
Some college no degree	23.9%	20.0%	22.9%
Associate degree	7.8%	6.2%	7.1%
Bachelor’s degree	16.6%	16.1%	17.1%
Graduate or professional degree	11.2%	8.8%	9.5%
<b>Total</b>	<b>100%</b>	<b>100%</b>	<b>100%</b>

Source: US Census 2000, P37 [35] Universe: Population 25 years and over

As Table 2 displays, there is a vast difference in the educational attainment level of the population 25 years of age and over among the five cities within the Citrus service area. For example, in Claremont, 52.4 percent of the adult population holds a bachelor’s degree or higher, whereas only 14.2 percent of Azusa’s adult population are college graduates.

**Table 2**

**Percent Distribution of Educational Attainment for Population 25-Years Old and Over by City**

	<b>Azusa</b>	<b>Claremont</b>	<b>Duarte</b>	<b>Glendora</b>	<b>Monrovia</b>	<b>Los Angeles County</b>
Less than 9th grade	22.1%	2.7%	12.9%	4.1%	9.5%	16.2%
9th to 12th grade, no diploma	17.2%	4.8%	12.7%	8.8%	12.4%	13.8%
High school graduate (includes equivalency)	19.9%	14.4%	22.3%	21.7%	19.6%	18.8%
Some college, no degree	20.7%	18.8%	21.5%	29.5%	25.4%	20.0%
Associate degree	5.9%	6.8%	7.0%	10.2%	7.9%	6.2%
Bachelor’s degree	9.9%	24.1%	16.3%	16.5%	16.9%	16.1%
Graduate or professional degree	4.3%	28.3%	7.3%	9.1%	8.2%	8.8%
Total population 25 years and over	100%	100%	100%	100%	100%	100%

# Enrollment Trends

Annual headcount enrollment has fluctuated from 2005-06 to 2006-07. In the mean time, FTES (full-time equivalent students) have been rising in the last three years.

**Table 3**  
**Annual Headcount Enrollment**

Year	Enrollment
2005-2006	21,468
2006-2007	20,525
2007-2008	23,410

**Table 4**  
**Annual FTES**

Year	FTES
2005-2006	11,564
2006-2007	11,882
2007-2008	11,981

# Student Demographics

As depicted in the table below, the majority of Citrus College students enrolled in credit classes belong to the traditional age group, age 24 and younger, and their proportion has been increasing in the last five years from 69.8 percent in fall 2004 to 73.4 percent in fall 2008. There are more female students than male students, but the gap has been decreasing over recent years. Citrus College also has a fairly diverse student population. In fall 2008, about 10 percent of Citrus students were Asian, 5 percent black, 25.7 percent white, and 42 percent Hispanic. As a federally-designated Hispanic Serving Institution, it should be noted that the percent population of Hispanic students at Citrus College is much higher than that of the state-wide average of students attending a community college: 43.2 percent versus 33.4 percent based on fall 2007 enrollment.

**Table 5**  
**Credit Students by Age, Fall 2004 to Fall 2008**

	Fall 2004		Fall 2005		Fall 2006		Fall 2007		Fall 2008	
	Number	Percent	Number	Percent	Number	Percent	Number	Percent	Number	Percent
<b>19 or younger</b>	3,978	32.8%	4,040	33.9%	3,886	34.2%	4,384	34.3%	4,798	34.9%
<b>20-24</b>	4,486	37.0%	4,376	36.8%	4,210	37.0%	4,843	37.9%	5,296	38.5%
<b>25-29</b>	1,283	10.6%	1,268	10.6%	1,200	10.5%	1,320	10.3%	1,510	11.0%
<b>30-34</b>	665	5.5%	620	5.2%	582	5.1%	686	5.4%	649	4.7%
<b>35-39</b>	489	4.0%	474	4.0%	450	4.0%	471	3.7%	490	3.6%
<b>40-49</b>	810	6.7%	718	6.0%	671	5.9%	661	5.2%	645	4.7%
<b>50 and above</b>	419	3.5%	407	3.4%	367	3.2%	418	3.3%	363	2.6%
<b>Data not Available</b>	4	0.0%	4	0.0%	9	0.1%	4	0.0%	3	0.0%
<b>Total</b>	12,134	100%	11,907	100%	11,375	100%	12,787	100%	13,754	100%

Source: MIS Referential Files (CCCCO)

**Table 6**  
**Credit Students by Gender**

	Fall 2004		Fall 2005		Fall 2006		Fall 2007		Fall 2008	
	Number	Percent	Number	Percent	Number	Percent	Number	Percent	Number	Percent
Female	6,862	56.6%	6,678	56.1%	6,391	56.2%	6,929	54.2%	7,350	53.4%
Male	5,270	43.4%	5,228	43.9%	4,981	43.8%	5,729	44.8%	6,047	44.0%
Data not available	2	0.0%	1	0.0%	3	0.0%	129	1.0%	357	2.6%
<b>Total</b>	<b>12,134</b>	<b>100%</b>	<b>11,907</b>	<b>100%</b>	<b>11,375</b>	<b>100%</b>	<b>12,787</b>	<b>100%</b>	<b>13,754</b>	<b>100%</b>

Source: MIS Referential Files (CCCCO)

**Table 7**  
**Credit Students, by Race/Ethnicity**

	Fall 2004		Fall 2005		Fall 2006		Fall 2007		Fall 2008	
	Number	Percent	Number	Percent	Number	Percent	Number	Percent	Number	Percent
African American Non-Hispanic	707	5.8%	673	5.7%	611	5.4%	743	5.8%	743	5.4%
Asian	1,637	13.5%	1,645	13.8%	1,474	13.0%	1,480	11.6%	1,389	10.1%
Hispanic	4,990	41.1%	4,996	42.0%	4,900	43.1%	5,519	43.2%	5,816	42.3%
Native American/Alaskan Native	88	0.7%	88	0.7%	79	0.7%	96	0.8%	109	0.8%
White Non-Hispanic	3,914	32.3%	3,718	31.2%	3,532	31.1%	3,648	28.5%	3,540	25.7%
Other	247	2.0%	262	2.2%	235	2.1%	234	1.8%	193	1.4%
Decline to State	488	4.0%	460	3.9%	488	4.3%	404	3.2%	317	2.3%
Data not available	63	0.5%	65	0.5%	56	0.5%	663	5.2%	1,647	12.0%
<b>Total</b>	<b>12,134</b>	<b>100.0%</b>	<b>11,907</b>	<b>100.0%</b>	<b>11,375</b>	<b>100.0%</b>	<b>12,787</b>	<b>100.0%</b>	<b>13,754</b>	<b>100.0%</b>

Source: MIS Referential Files (CCCCO)



## Educational Goals

Among those students who clearly stated their educational goals, many hope to receive a two-year associate degree or transfer to a four-year institution. Since the inception of online application and registration, it has not been mandatory for students to indicate their educational goal; as a result many students did not answer that question in fall 2007 and fall 2008. It is expected that the number of students who did not state will decrease substantially in the future terms.

**Table 8**  
**Student Educational Goals**

	Fall 2004		Fall 2005		Fall 2006		Fall 2007		Fall 2008	
	Number	Percent	Number	Percent	Number	Percent	Number	Percent	Number	Percent
<b>Transfer</b>	8,074	66.5%	7,891	66.3%	7,661	67.3%	1,890	14.8%	3,902	28.4%
<b>A.A/AS or Certificate</b>	2,402	19.8%	2,424	20.4%	2,240	19.7%	1,664	13.0%	3,254	23.7%
<b>Career/Ed Development</b>	541	4%	495	4%	433	4%	850	7%	1,396	10.1%
<b>Improve Basic Skills</b>							111	1%	120	0.9%
<b>Did not State</b>	1,117	9%	1,097	9%	1,041	9%	8,272	65%	5,082	36.9%
<b>Total</b>	12,134	100%	11,907	100%	11,375	100%	12,787	100%	13,754	100%

Source: MIS Referential Files (California Community College Chancellor's Office)